



Sand And Sky Creations

Wool

Knitwear



Simone Van Iderstine's Adaptation of "We Call Them Pirates"
The original pattern may be found at <http://www.helloyarn.com>

It was love at first sight with Hello Yarn's "We Call Them Pirates" hat but I didn't have the weight of yarn or the right size needles suggested so I adapted the pattern for what I had on hand. You don't really need the 20" circular. You may use double pointed needles instead.

Yarn: Worsted weight (9 wpi) yarn ~135 yards each of main color (MC) and contrast color

Pictured in Merino Wool and Samoyed worsted from Belfast Mini Mills.

Needles: 5 mm 20" circular needle
5 mm double pointed needles (dpns)
OR SIZE NECESSARY TO OBTAIN GAUGE

Gauge: 20 sts X 24 rows = 4" in Stockinette St.

Notions: Stitch marker and tapestry needle.

Finished Size: Circumference – 20"
Deep – 9"

Herring Bone Trim

Using 5 mm 20" circular needle and MC, CO 90 sts. Place marker and join for working in the round being careful not to twist. Join CC.

Round 1: *Knit 1 MC, Knit 1 CC* around. (90 sts)

Round 2: Move both MC and CC to the front of your work. Purl 1 MC, pick up CC and bring it over the MC strand, purl 1 CC. Continue purling in this manner bringing working yarn over the strand used for the previous stitch. The two yarns will become very twisted during this round but will be untwisted as you knit round 3

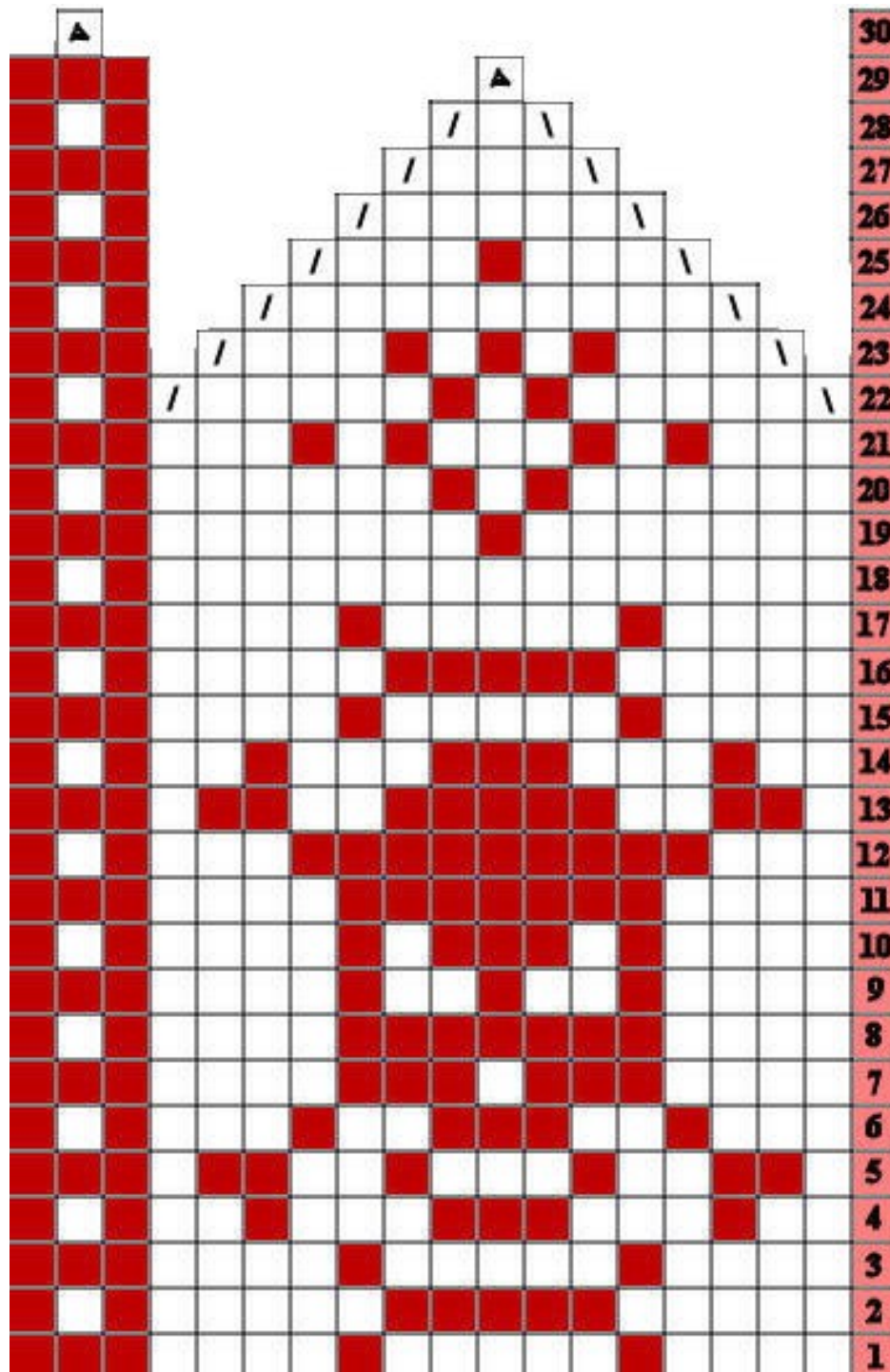
Round 3: Purl 1 MC, purl 1 CC, tucking yarn under the previously worked strand.

Body

Knit one round in MC.

Work rounds 1-14 of chart twice.

Work rounds 15-30 once, switching over to dpns when there are too few stitches to continue on the circular.



Legend

- - Main color (MC)
- - Contrast color (CC)
- / - K2tog
- \ - Ssk
- ▲ - S11, K2tog, pss0

Finishing

Cut yarn, leaving a 6" tail. Pull through the remaining stitches and sew in ends.

If you have any questions or comments, I would love to hear from you!

Website: <http://sandandskycreations.com>

Email: sandandskycreations@gmail.com

Ravelry: sandandsky

Etsy: SandAndSkyCreations